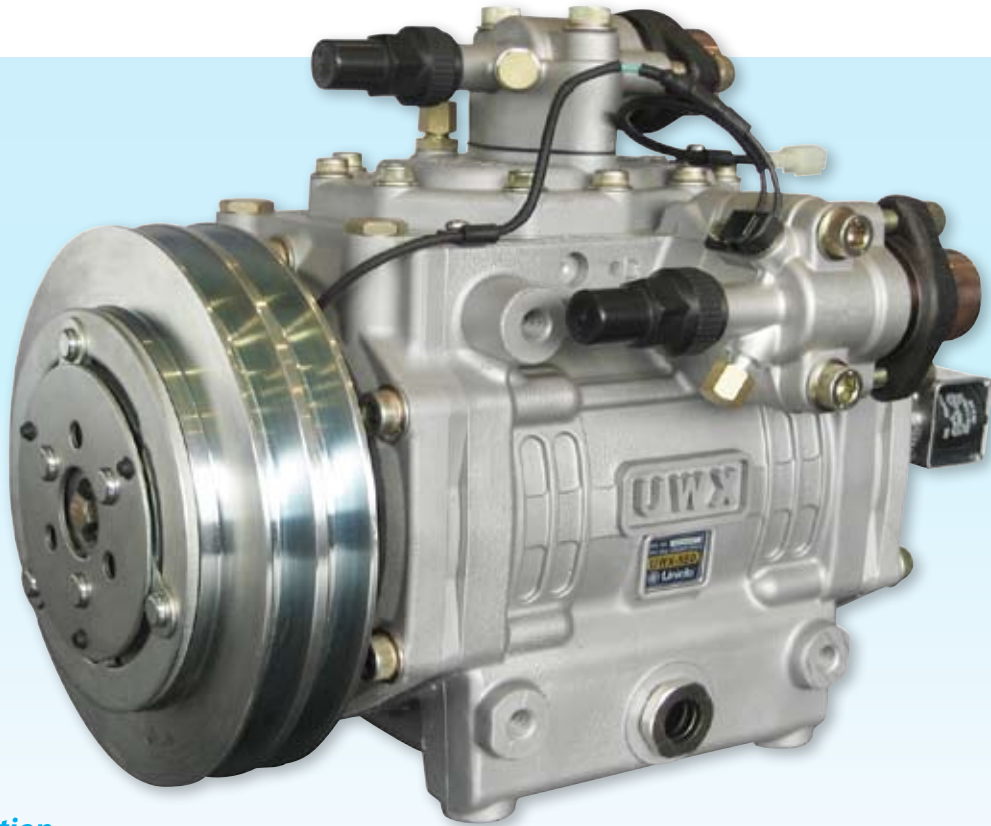




Unicla **UWX550/440** Spare Parts Range

Suitable for Bus, Coach and Industrial Fleet applications



Introduction

Unicla has introduced a complete range of spare parts to support the UWX550 and UWX440 series compressors working in bus, coach and industrial applications. The range of parts includes all the major UWX components required to meet the demands of commercial vehicle fleet owners.

General

All Unicla compressors and components are manufactured to precise engineering standards, and procedures meet ISO9001 and ISO9002. Only genuine Unicla replacement parts should be used during compressor repair or service operations. Unicla recommended service procedures should be followed at all times, and reference should be made to the UWX service manual whenever necessary. A copy of this is available from Unicla head office or as a download from www.unicla.hk

Range of parts available

Clutch armature 27206-000160

Note: may require replacement in conjunction with pulley. Surface condition of pulley and armature must be smooth and consistent.



Clutch fitting kit CK550



**Clutch pulley and armature set
178mm BB type CL550-BB-178**



**Clutch pulley and armature set
210mm BB type CL550-BB-210**

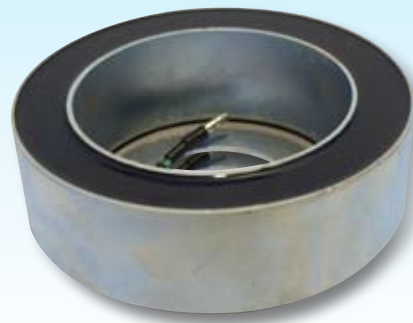


Note: pulleys listed are common types - other specific models available upon request

**Clutch pulley and armature set
210mm 8PG type CL550-8PG-210**



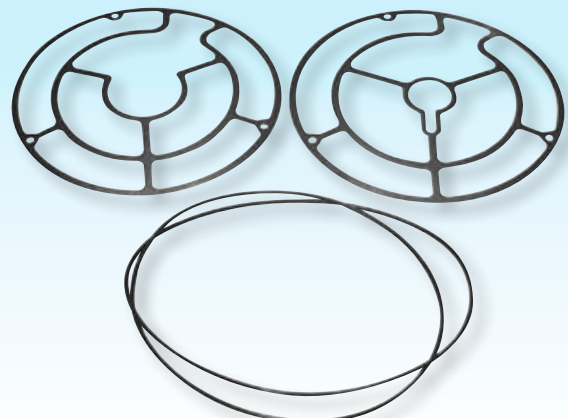
Clutch field coil
(12v Black wire) **27204-000080**
(24v Green wire) **27204-000010**



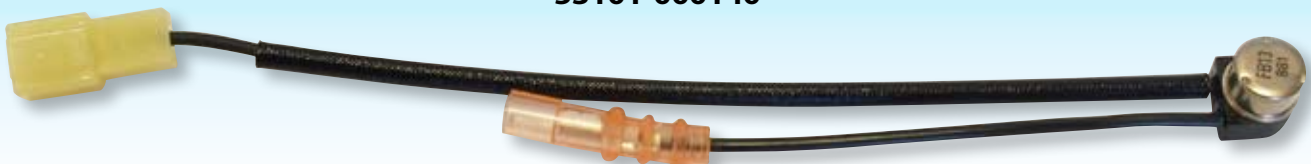
**Shaft seal kit
92503-0000110**



**Gasket kit
GS550**



**Thermal switch to suit rear manifold (32308-000760) setting cut out 95°C - cut in 75°C
53101-000140**



Gasket - hose manifold
93203-000010



Oring - hose port
93203-000020



Oring front and rear
92501-000500



Filter screen
43701-000290



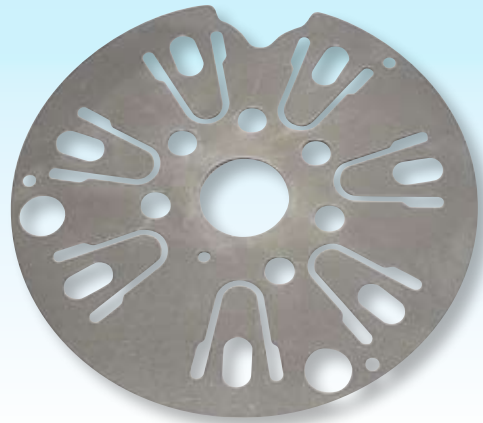
Filter insert
43701-000270



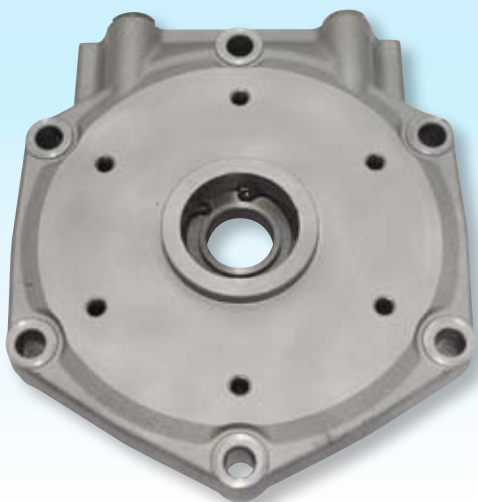
Valve plate assembly
front - 22601-000010
rear - 22601-000090



Suction valve assembly - front and rear
22602-000010



Front cap 21510-000040



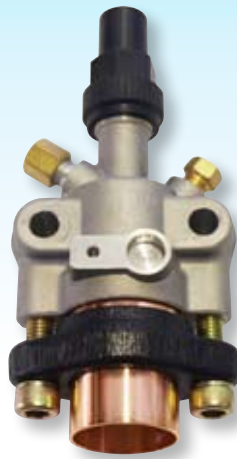
Rear cap 21505-000250



**Suction hose manifold
and shut off valve**
38101-000040



**Discharge hose manifold
and shut off valve**
38101-000050



Front nose
21510-000030



Complete working assembly
UWX440 – 22010-00360
UWX550 – 22010-00370



Unidap 6 POE oil 4 litre
Unidap6-4

Unidap 6 POE oil 1 litre
Unidap6-1

Unidap 7 PAG oil 1 litre
Unidap7-1

Unidap 7 PAG oil 250cc
Unidap7-250

■ **Special Instructions:**

1. Clutch Armature may require replacement in conjunction with clutch pulley. Surfaces condition of both components must be smooth and consistent. Unicla fitting instructions contained on page 3 of service manual must be strictly adhere to.
2. Clutch pulley may require replacement due to worn surface condition or bearing has exceeded its life expectancy of ≥ 8500 hours.
3. Working Assembly is available to approved Unicla service agents and distributors who have the completed necessary training and have the relative Unicla tools listed in the Unicla service manual.
4. Working assembly replacement must also include replacement of seal kit part no. 92503-0000110 and gasket kit part no. GS550

For detailed information about Unicla recommendations on such areas as fitting compressors in special applications, measuring compressor thermal and pressure loads, and calculating extra oil requirements in larger systems, we recommend you visit our website where expert advice from Unicla engineers can be found.



Unicla International Limited

Unit 1209-1210, 12F, Manhattan Centre, 8 Kwai Cheong Rd,
Kwai Chung, N.T., Hong Kong. Phone (852) 2422 0180 Fax (852) 2422 0680
Email: sales@unicla.hk Website: www.unicla.hk

Distributed by:

